

PAS – DE – DEUX

Pursuit Race

Hosted by



Saturday, October 3, 2020
11 h 00

SAILING INSTRUCTIONS

1. RULES

- The race will be governed by the Racing Rules of Sailing (RRS).
- This race has been organized in accordance with Federal, Provincial and Local regulations relating to COVID-19.
- Skippers are responsible for complying with all COVID-19 regulations and guidelines (See Appendix-2)

2. SPECIAL INSTRUCTIONS

- There shall be no more than 2 active crewmembers on board each boat – extra persons may be carried as passengers (strongly discouraged) but must not take part in the workings of the boat other than in an emergency and all must comply with the Covid Protocols. (See Appendix-2)
- This is a white sail race. No spinnakers may be flown. **Single-handed boats are eligible!**

3. ENTRIES AND REGISTRATION

- Open to PHRF racers and cruisers with a current SLVYRA handicap rating.
- All participating boats shall register by emailing pcycfleetcaptain@yahoo.com by 21h00 Thursday, October 1, stating:

Mark Windward (your name)

Kookaburra (your boat name)

Mirage 24 (your boat type)

8442 (your sail number)

249 (your SLVYRA whitesail **VB T/D** handicap, that you can obtain on the SLVYRA website)

The PCYC Fleet Captain will reply with your Start Time on the Friday prior to the race.

- c. Prior to the warning signal, all competitors shall sail by the stern of the race committee boat hailing their sail number and start time. Ex: “**eight four four two, one minute fifteen seconds**”
- d. On-the-water late entrants may be accepted and assigned start times entirely at the Race Committee's discretion.
- e. Boats will be handicapped according to PHRF T/D rating. If a boat does not have a valid handicap, the organizing committee will assign a provisional handicap for this race. In order to simplify the assignment of start times, some boats may be grouped for the start. The decision of the race committee will be final.
- f. Your start time (delay) is the number of seconds/minutes, following the start signal, that each boat should cross the starting line. The first boat over the finish line shall be deemed to be the winner and so on until all entrants have crossed the finish line.

4. CHANGES TO SAILING INSTRUCTIONS

- a. Any changes to the Sailing Instructions will be emailed by the PCYC Fleet Captain to all participants and Race Committee by 20h00 Friday, October 2, 2020.

5. SIGNALS MADE ASHORE

- a. Signals made ashore will be displayed on the flagpole of each club or Committee Boat of the host club (PCYC).
- b. The host club Race Committee will communicate these signals to its neighbour clubs by cellphone and/or VHF Channel 68, so that the same signals can be displayed at each club.
- c. When flag AP is displayed ashore, “1 minute” is replaced with “not less than 30 minutes” in the race signal AP.

6. THE START LINE

- a. The start line will be between the RC flag mast on the Committee boat and SLVYRA mark #32 .

7. START SEQUENCE AND DIVISIONS

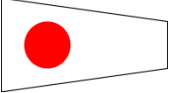
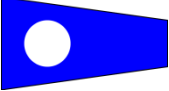
- a. The scheduled time for the first warning signal is **11h00**, with the scratch boat starting 5 (five) minutes after the warning signal.
- b. There shall be just one racing division for Keelboats.
- c. The class flag will be **pumpkin orange**.

8. MARKS

- a. The racing marks have been selected from the current SLVYRA racing mark chart (See Appendix 1).

9. THE RACE COURSES

- a. There are two (2) possible race courses of equal length. The same SLVYRA marks are used by each course but the sailing direction is reversed (See Appendix-1).
- b. The Race Committee will select the most favourable course based on the wind direction.
- c. Prior to the warning signal, a numeral pennant will be displayed on the Race Committee boat to indicate which course has been selected:

COURSE SELECTED	FLAG DISPLAYED	NAVIGATION
1		Start at 32 – 34P – 44P – 33S – 43P – 31P – Finish at 32
2		Start at 32 – 31S – 43S – 33P – 44S – 34S – Finish at 32

10. RECALLS

- a. In the event that any boat(s) crosses the start line prior to their assigned starting time, one sound signal (horn) will be heard and code flag “X” will be flown. The over-early boat must return and round either end of the starting line before restarting their race. This changes RRS 29.1.

11. THE FINISH

- a. The finish line will be between the RC flag mast on the Committee boat and SLVYRA mark #32.

12. TIME LIMITS

- a. The time limit for all boats to complete the course shall be 40 (forty) minutes after the first boat finishes the course.
- b. All boats not finishing within the time limit will be scored as DNF (Did Not Finish). This changes Rule 35.

13. PROTESTS

- a. There will be no protest hearings arising from this fun and friendly race.

14. SCORING

- a. The first boat over the finish line having successfully completed the course shall be the winner. Likewise, further positions shall be awarded to all boats in order of finishing the race. All these positions will count towards respective Yacht Club’s total score.

15. SAFETY REGULATIONS

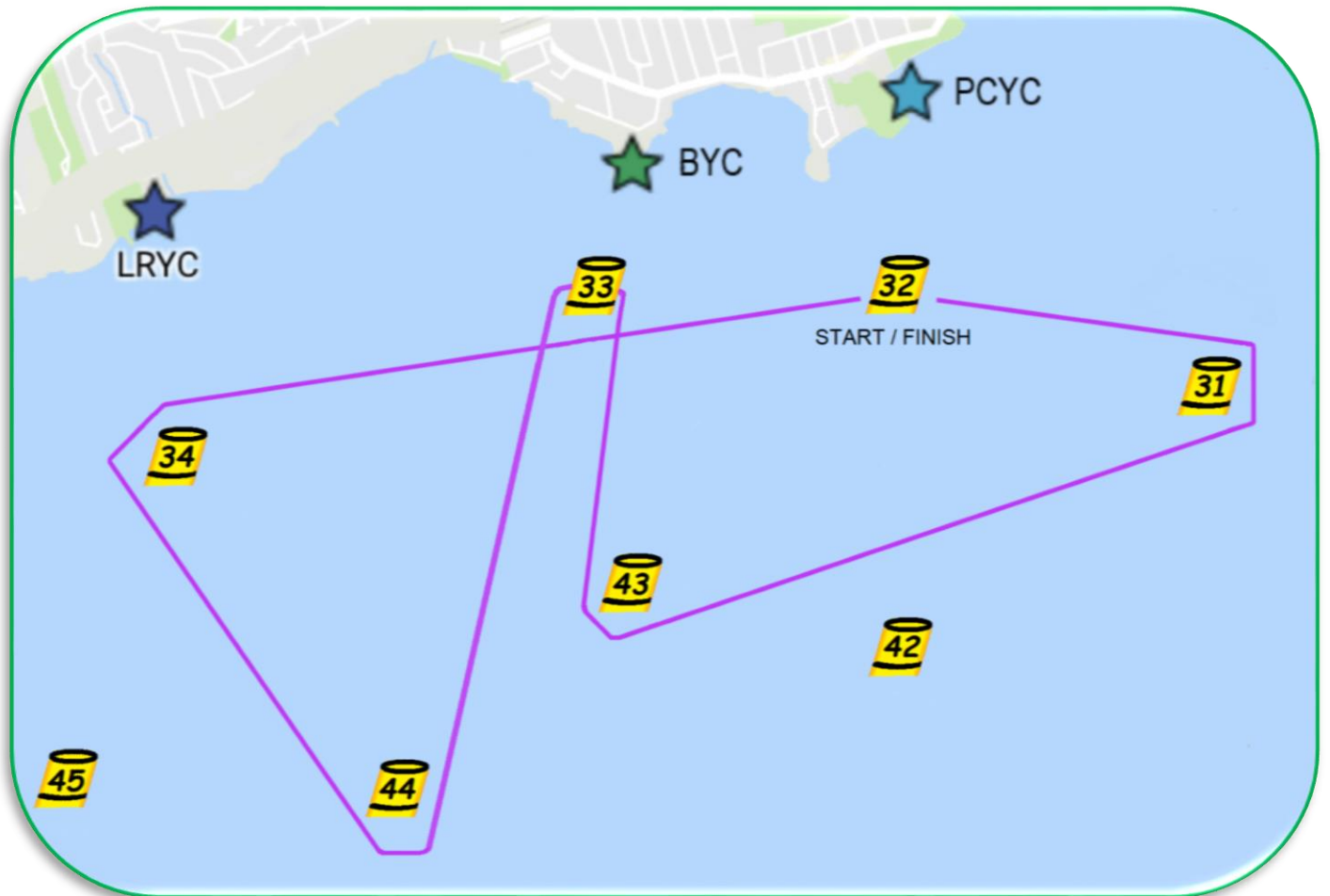
- a. A boat that retires from a race shall notify the race committee as soon as possible by either passing by the R/C boat or via VHF channel 68.
- b. Single-handed racers are required to wear a lifejacket or personal flotation device.

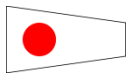
16. PRIZES

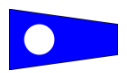
- a. Prizes will be awarded to first, second and third place finishers.
- b. The Lac St-Louis Pas-de-Deux trophy will be awarded to the winning Yacht Club based on the finishing position of all entrants that complete the course successfully.

APPENDIX – 1

THE RACE COURSES



Course – 1	Bearing (°M)	Distance (nm)
		
32 to 34	275°	1.77
34 to 44	159°	0.97
44 to 33	037°	1.12
33 to 43	186°	0.55
43 to 31	088°	1.41
31 to 32	301°	0.72

Course -2	Bearing (°M)	Distance (nm)
		
32 to 31	121°	0.72
31 to 43	268°	1.41
43 to 33	006°	0.55
33 to 44	217°	1.12
44 to 34	339°	0.97
34 to 32	095°	1.77

Total distance: 6.54 nm

APPENDIX – 2

COVID-19 PROTOCOLS

Multi-crewed boats shall comply with the following summary of guidelines issued by the Fédération de Voile du Québec:

1. The main directive is to ensure that physical distancing is maintained overall. Therefore, the number of crew on your boat (NOT living under the same roof) must allow everyone onboard to respect the 2m distancing at all times.
 - 1.1. On boats which permit the 2M distancing, short and sporadic contact which is inherent in this sport is acceptable if the 2M distance is temporarily broken during maneuvers. During this breach, the cumulative time shall not exceed fifteen (15) minutes for the whole day or the regatta. Strategies should be put in place to minimise the contact between individuals (reducing crew size, etc.).
 - 1.2. Should you decide to make use of masks during a race, they shall be considered ineffective when wet (from splash, rain, sweat, etc.).

2. Avoid as best as possible the sharing of equipment.
 - 2.1. Should this occur, have protocols in place for disinfecting the equipment.

Competitors participate entirely at their own risk. The organizing authorities will not accept any liability for material damage, personal injury, illness or death sustained in conjunction with or prior to, during or after the race.